

# Benefits of Trees

The benefits that trees provide can be social, communal, environmental, and economic.

*Most trees and shrubs in cities or communities are planted to provide beauty or shade. While these are excellent benefits, woody plants serve many other purposes. The benefits of trees can be grouped into social, communal, environmental, and economic categories.*

## Social Benefits

Human response to trees goes well beyond simply observing their beauty. We feel serene, peaceful, restful, and tranquil in a grove of trees. We are “at home” there.

The calming effect of nearby trees and urban greening can significantly reduce workplace stress levels and fatigue, calm traffic, and even decrease the recovery time needed after surgery. Trees can also reduce crime. Apartment buildings with high levels of greenspace have lower crime rates than nearby apartments without trees.



The stature, strength, and endurance of trees give them a cathedral-like quality. Because of their potential for long life, trees are frequently planted as living memorials. We often become personally attached to trees that we, or those we love, have planted.

The strong tie between people and trees is often evident when community residents speak out against the removal of trees to widen streets or rally to save a particularly large or historic tree.

## Communal Benefits

Even when located on private property, the benefits provided by trees can reach well out into the surrounding community. Likewise, large-growing trees can come in conflict with utilities, views, and structures that are beyond the bounds of the owner’s property. With proper selection and maintenance, trees can enhance and function on one property without infringing on the rights and privileges of neighbors.

City trees often serve several architectural and engineering functions. They provide privacy, emphasise views, or screen out objectionable views. They reduce glare and reflection. They direct pedestrian traffic. Trees also provide background to soften, complement, or enhance architecture.

Trees bring natural elements and wildlife habitats into urban surroundings, all of which increase the quality of life for residents of the community.

## Environmental Benefits

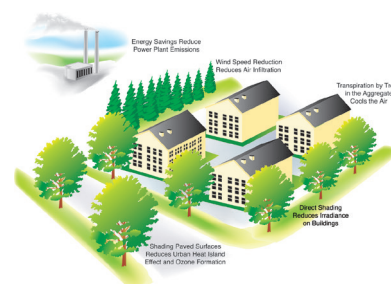
Trees alter the environment in which we live by moderating climate, improving air quality, reducing storm-water runoff, and harboring wildlife. Local climates are moderated from extreme sun, wind, and rain. Radiant energy from the sun is absorbed or deflected by leaves on deciduous trees in the summer and is only filtered by branches of deciduous trees in winter. The larger the tree, the greater the cooling effect. By using trees in the cities, we can moderate the heat-island effect caused by pavement and buildings in commercial areas.

Wind speed and direction is affected by trees. The more compact the foliage on the tree or group of trees, the more effective the windbreak. Rainfall, sleet, and hail are absorbed or slowed by trees, providing some protection for people, pets, and buildings. Trees intercept water, store some of it, and reduce storm-water runoff.

Air quality is improved through the use of trees, shrubs, and turf. Leaves filter the air we breathe by removing dust and other particulates. Rain then washes the pollutants to the ground. Leaves absorb the greenhouse gas carbon dioxide during photosynthesis and store carbon as growth. Leaves also absorb other air pollutants—such as ozone, carbon monoxide, and sulphur dioxide—and release oxygen.



By planting trees and shrubs, we return developed areas to a more natural environment that is attractive to birds and wildlife. Ecological cycles of plant growth, reproduction, and decomposition are again present, both above and below ground. Natural harmony is restored to the urban environment.



## Economic Benefits

Property values of landscaped homes are 5 to 20 percent higher than those of non-landscaped homes. Individual trees and shrubs have value, but the variability of species, size, condition, and function makes determining their economic value difficult. The economic benefits of trees are both direct and indirect.

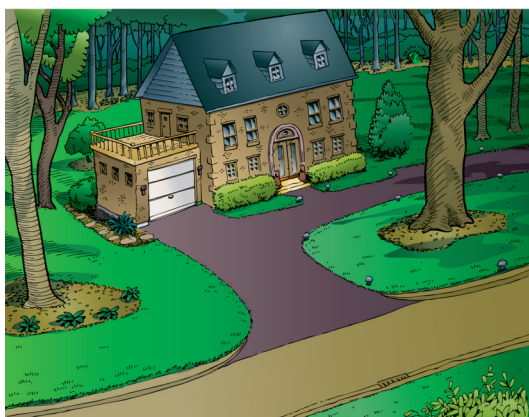
Direct economic benefits are usually associated with energy costs. Air-conditioning costs are lower in a tree-shaded home. Heating costs are reduced when a home has a windbreak.

Trees increase in value as they grow. Trees, as part of a well maintained landscape, can add value to your home.

The indirect economic benefits of trees within a community are even greater. Customers pay lower electricity bills when power companies build fewer new facilities to meet peak demands, use reduced amounts of fossil fuel in their furnaces, and use fewer measures to control air pollution. Communities can also save money if fewer facilities must be built to control stormwater in the region. To the individual, these savings may seem small, but to the community as a whole, reductions in these expenses are often substantial.



## Trees Require an Investment



Trees provide numerous aesthetic and economic benefits, but also incur some costs. Investing in a tree's maintenance will help to return the benefits you desire. The costs associated with large tree removal and replacement can be significant. In addition, the economic and environmental benefits produced by a young replacement tree are minimal when compared to those of a mature specimen. Extending the functional lifespan of large, mature trees with routine maintenance can delay these expenses and maximize returns.

An informed home owner can be responsible for many tree maintenance practices. Corrective pruning and mulching gives young trees a good start. Shade trees, however, quickly grow to a size that may require the services of a professional arborist. Arborists have the knowledge and equipment needed to prune, treat, fertilize, and otherwise maintain a large tree. Your council arborist or consulting arborist can answer questions about tree maintenance, suggest treatments, or recommend qualified arborists.

This brochure is one in a series published by the New Zealand Arboricultural Association with kind permission from the International Society of Arboriculture as part of its Consumer Information Program.

Benefits of Trees

Pruning Young Trees

New Tree Planting

Pruning Mature Trees

Why Hire an Arborist

E-mail inquiries: [askanarborist@nzarb.org.nz](mailto:askanarborist@nzarb.org.nz)

©2013 International Society of Arboriculture.

Through research, technology, and education, the International Society of Arboriculture promotes the professional practice of arboriculture and fosters a greater worldwide awareness of the benefits of trees. For further information, contact:

ISA, P.O. Box 3129, Champaign, IL 61826-3129, U.S.

E-mail inquiries: [isa@isa-arbor.com](mailto:isa@isa-arbor.com)



[www.isa-arbor.com](http://www.isa-arbor.com) • [www.treesaregood.org](http://www.treesaregood.org)